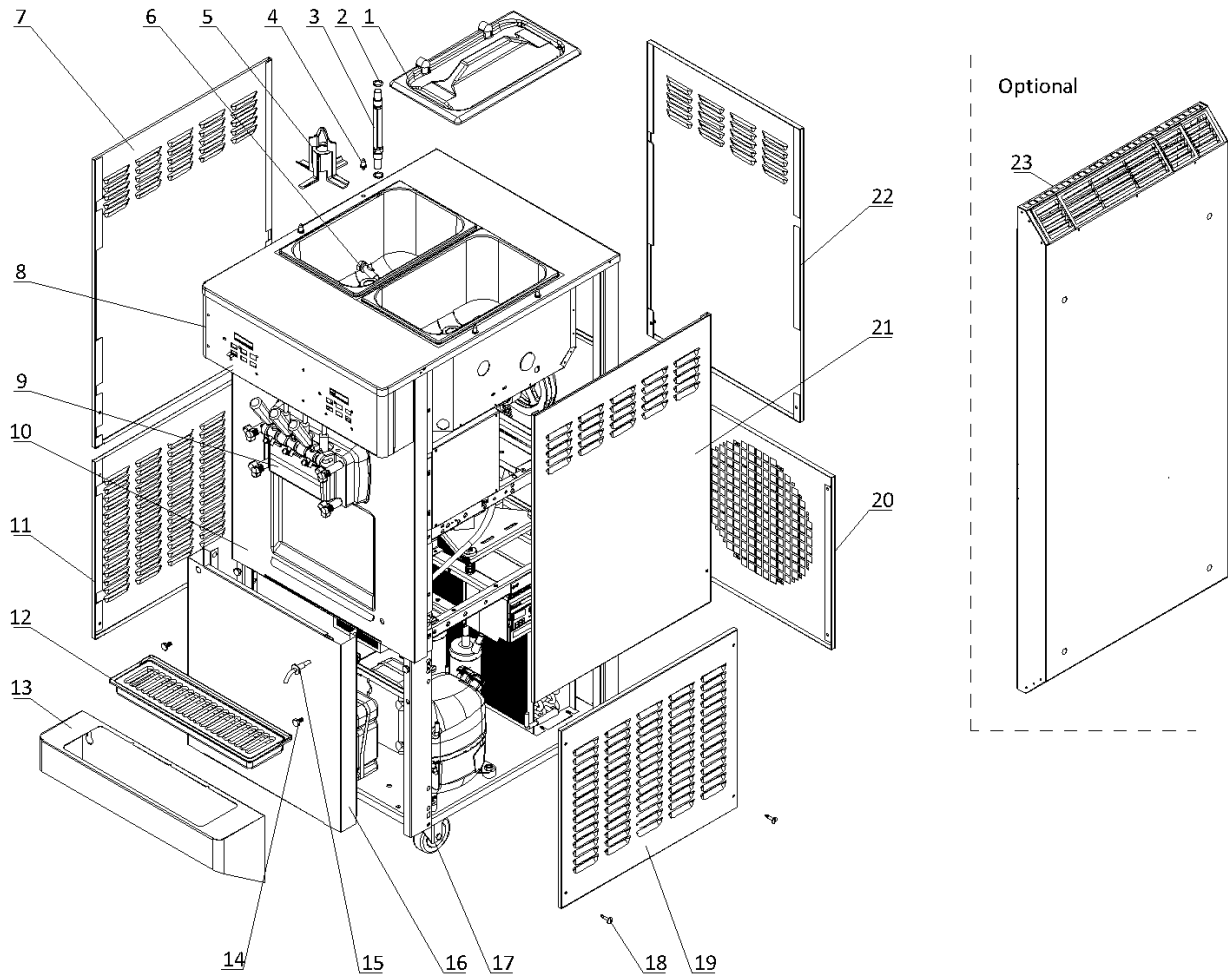


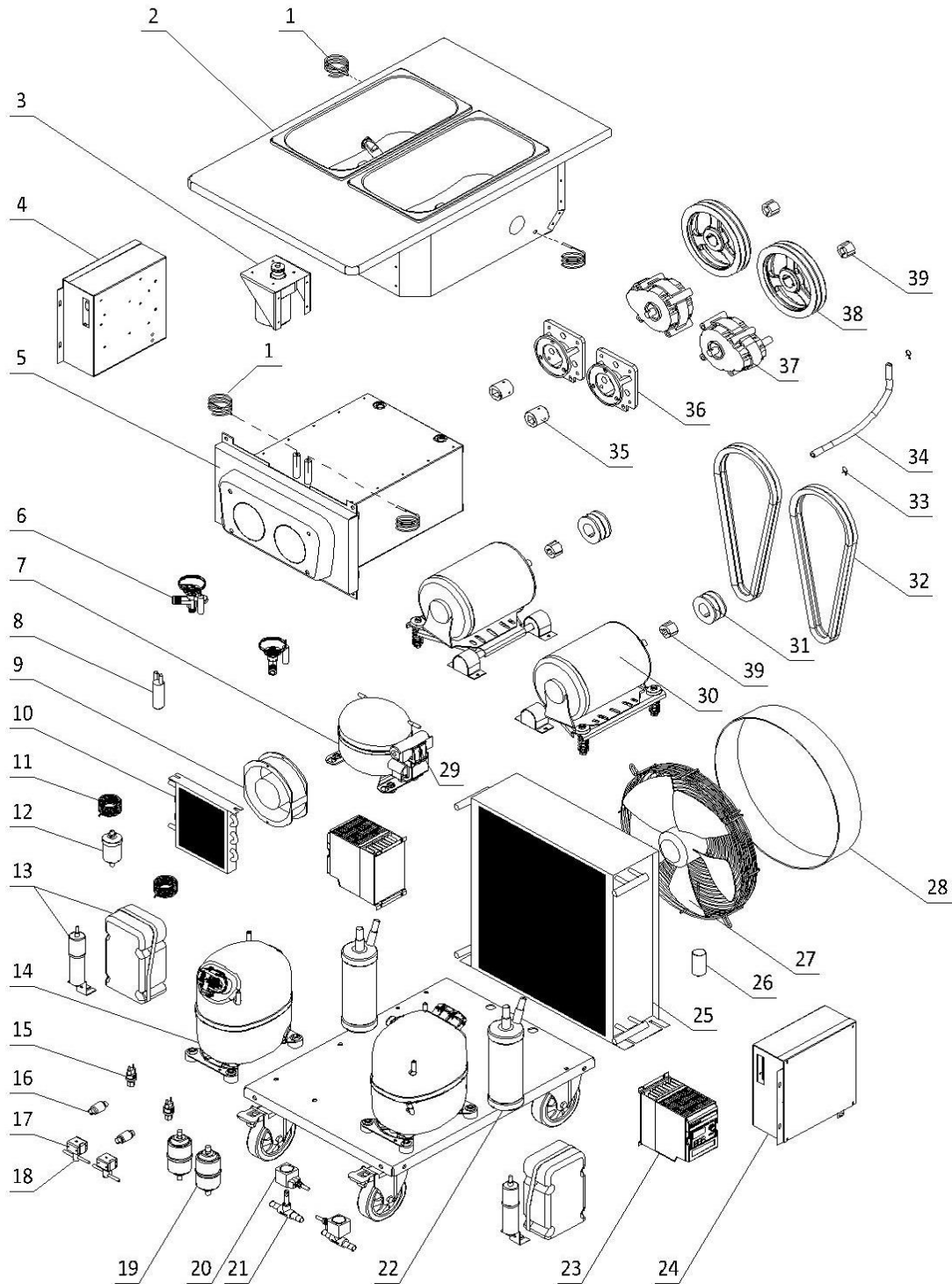
1. External Parts



1. External Parts

Item	Part Number	Description	Qty.
1	3.4.03.01.006	Hopper Lid - 19L	2
2	3.4.08.01.002	O-Ring - 18x2.2	4
3	2.1.3.39.0022	Air Tube - SS - 262mm	2
4	3.6.39.011	Hopper Lid Holder	4
5	Page 7	Hopper Agitator	1
6	920.1.04.0002	Mix Low Sensor Assembly	2
7	2.3.4.29.037	Panel - Upper Left - 2F - 3.4qt - R02	1
8	Page 6	Draw Switch and Front control Panel	1
9	Page 5	Dispensing Door and Beater	1
10	2.3.4.26.085	Panel - Middle Front - 2F - 3.4qt - R02	1
11	2.3.4.32.060	Panel - Lower Left - 2F - 3.4qt - R02	1
12	3.4.04.01.015	Front Drip Tray - 490mm	1
13	2.3.4.45.677	Support - Front Drip Tray - 6378-C/AC	1
14	3.6.39.004	Drip Tray Mounting Bolt	2
15	2.1.1.20.0124	Drain Nozzle - Front	1
16	2.3.4.27.062	Panel - Lower Front - 2F - 3.4qt - R02	1
17	3.3.05.02.002	Caster Swivel - 125X34	4
18	920.2.11.0002	Quarter-Turn Fastener	18
19	2.3.4.32.061	Panel - Lower Right - 2F - 3.4qt - R02	1
20	2.3.4.25.056	Panel - Lower Rear - 2F - 3.4qt - R02	1
21	2.3.4.31.036	Panel - Upper Right - 2F - 3.4qt - R02	1
22	2.3.4.24.048	Panel - Upper Rear - 2F - 3.4qt - R02	1
23	920.1.08.0011	Air Chute Assembly - 2F - 3.4qt (Optional)	1

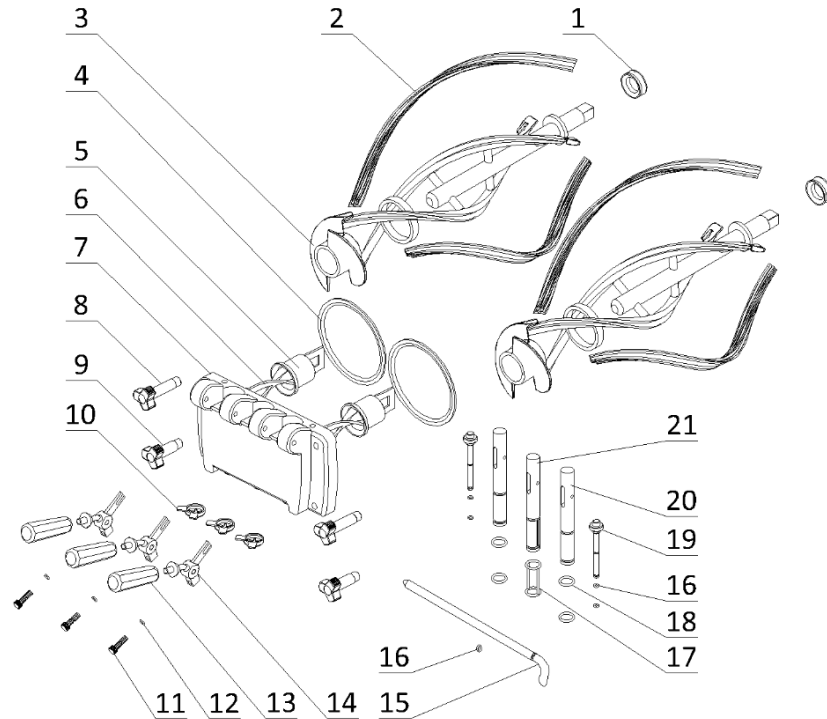
2. Internal Parts



2. Internal Parts

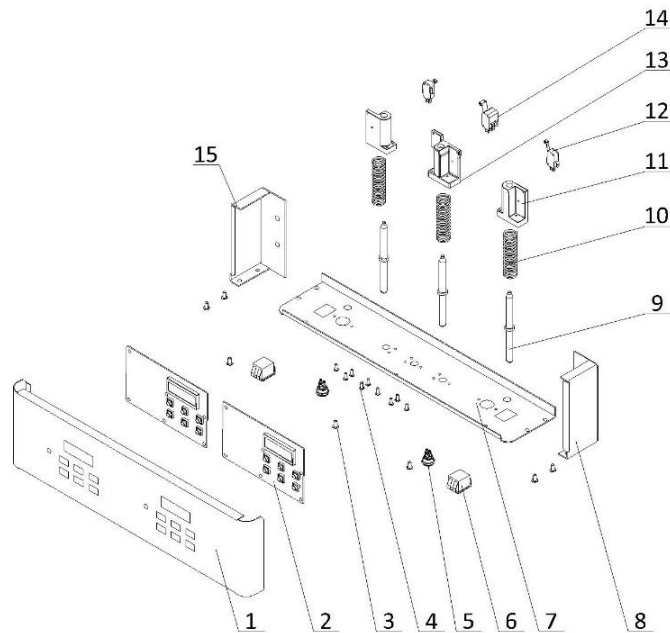
Item	Part Number	Description	Qty.
1	3.1.02.13.020	Temperature Probe - PT100	4
2	2.1.1.03.0130	Hopper Assembly - 6378-C - R02	1
3	Page 7	Agitator Motor	1
4	Page 8	Electrical Box - Left	1
5	2.1.1.06.0195	Cylinder Assembly - 2F - 3.4qt	1
6	3.2.04.01.013	Thermal Expansion Valve - TUB2134	2
7	3.2.01.01.005.A	Auxiliary Compressor - TL3G	1
8	3.2.04.07.001	Suction Accumulator - 25×100×0.6	1
9	3.2.03.01.005	Fan Motor - UF-1751B22H	1
10	3.2.02.01.001	Auxiliary Condenser - Single - 0.7m ²	1
11	3.2.05.01.002	Capillary Tube - 2×0.7	1
12	3.2.04.05.016	Filter Drier - Hopper - DTGA 032S	1
13	3.2.01.04.024	Start Component - Compressor - CAJ4519Z	2
14	3.2.01.02.042.A	Primary Compressor - CAJ4519Z	2
15	3.2.04.06.004	High Pressure Switch - 350~500psi	2
16	3.2.04.05.013	Copper Strainer Filter - φ12	2
17	3.2.04.04.059	Solenoid Coil - FQ-A0522G-000502-G502	2
18	3.2.04.04.069	Solenoid Valve Body - LDF2A01	2
19	3.2.04.05.002	Filter Drier - Cylinder - DML083S	2
20	3.2.04.04.072	Solenoid Coil - 042N4201	2
21	3.2.04.04.004	Solenoid Valve Body - EVU6 - 6W	2
22	3.2.04.08.001	liquid Receiver - 76x280	2
23	3.1.01.08.006	Inverter - 0.75kW - EFC3610-0K75-1P2-MDA	2
	3.1.01.08.019	Inverter - 0.75kW - MD200S0.75B-NC (Alternative)	2
24	Page 8	Electrical Box - Right	1
25	3.2.02.01.010	Main Condenser - Dual - 15m ²	1
26	3.2.03.04.001-2	Capacitor - Fan Motor - 450V - 5μF - CBB60	1
27	3.2.03.04.001	Fan Motor - 220/60/1 - YWF4E-350S	1
28	2.1.3.50.0002	Fan Shroud - 123cm	1
29	3.2.01.01.005-1	Start Component - Compressor - TL3G	1
30	3.3.01.04.009	Motor - 220/60/3 - 750W - P63LVGBD-1184	2
31	3.3.04.02.001	Pulley - Beater Motor - SPA63-2-1008	2
32	3.3.03.01.031	Belt - Motor to Beater - V-XPA975	4
33	3.6.05.024	Squeeze Clamp - Drain Hose - M13	2
34	3.7.06.025-3	Drain Hose - φ9×14 - 540mm	1
35	3.3.02.03.006	Coupling Drive - 3.4qt-4.0qt-7.3qt - 20mm - V3	2
36	2.1.3.15.0004	Bracket - Gear Box - 3.4-7.3qt - 89mm	2
37	3.3.02.01.028	Gear Box - 1:4.2 - 45*20 Shaft - 89mm	2
38	3.3.04.02.007	Pulley - Gear Box - SPA182-2-1008	2
39	3.3.04.01.005	Bushing - 1008-16	4

3. Dispensing Door and Beater



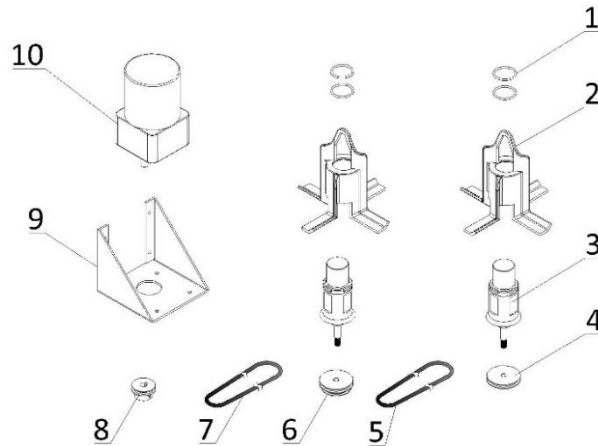
Item	Part Number	Description	Qty.
1	3.4.07.05.007	Gasket - Beater - ϕ 35	2
2	3.4.02.02.008	Helix Beater Blade - 3.4qt - V5	4
3	2.1.1.25.0017	Double Helix Beater - 3.4qt - V5	2
4	3.4.08.02.008	Door Gasket - SS - 3.4qt	2
5	3.4.01.03.008	Beater Guide - SS - 3.4qt - V2	2
6	2.1.1.11.0015	Helix Beater Rod - 3.4qt	2
7	2.1.3.14.0016	Dispensing Door - SS - 2F - 3.4qt - V2	1
8	3.4.05.02.011	Hand Screw - Long - Dispensing - 3.4qt	2
9	3.4.05.02.009	Hand Screw - Short - Dispensing - 3.4qt	2
10	3.4.05.03.004	Design Cap - Double Triangle - 31mm	3
11	3.6.39.008	Adjustment Screw - Handle - 34mm	3
12	3.4.08.01.012	O-Ring - 3x1.5	3
13	3.4.05.01.001	Handle - Dispensing - SS	3
14	2.1.3.26.0002	Seat - Handle - 2F - 3.4qt	3
15	2.1.3.27.0028	Retention Pin - Handle - 2F - 3.4qt - L	1
16	3.4.08.01.013	O-Ring - 5.2x1.9	5
17	3.4.08.01.015	H-Ring - 16.8x2.4x2	1
18	3.4.08.01.006	O-Ring - 16.8x2.4	4
19	2.1.3.02.0015	Prime Plug - SS - Standard	2
20	2.1.3.01.0005	Draw Valve - SS - 2F - 3.4qt - Side	2
21	2.1.3.02.0002	Draw Valve - SS - 2F - 3.4qt - Middle	1

4. Draw Switch and Front Control Panel



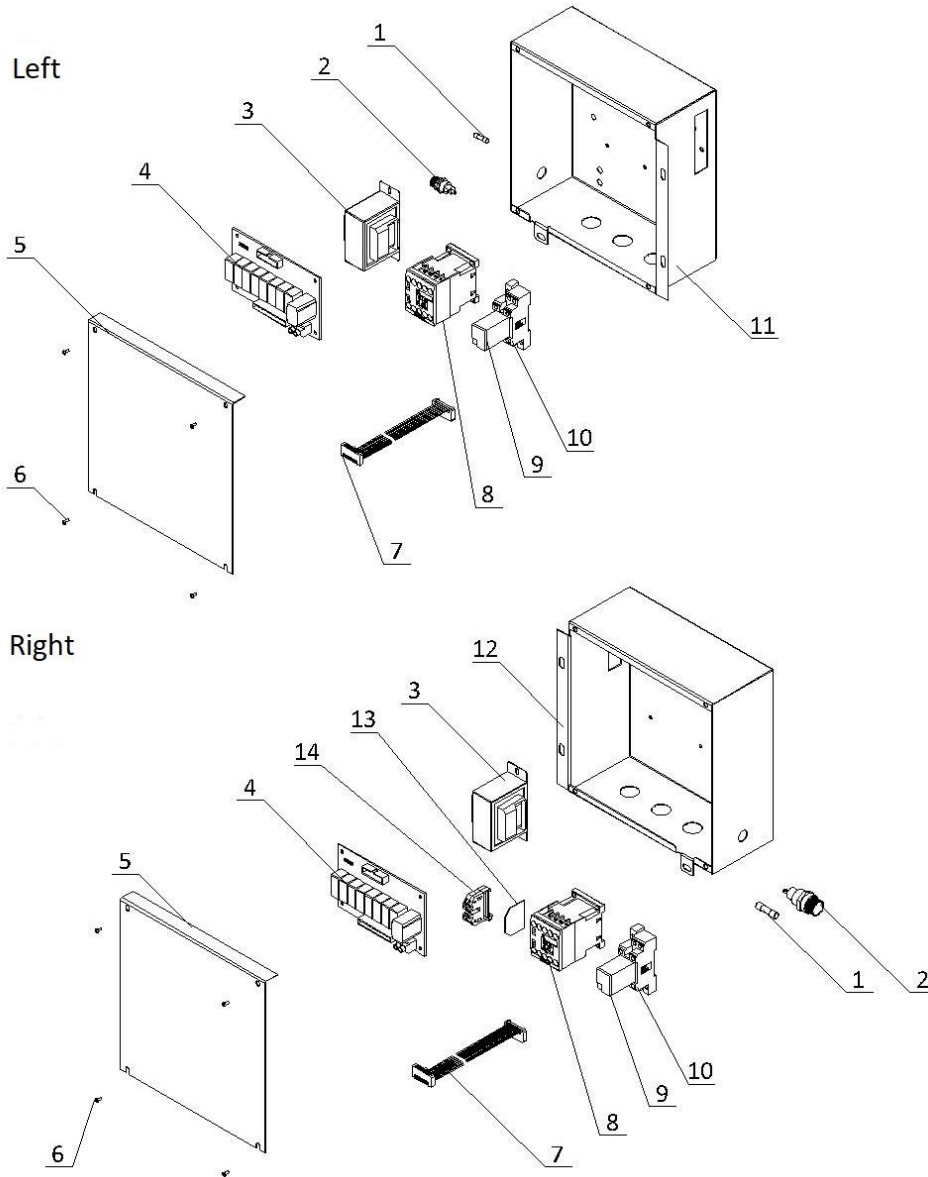
Item	Part Number	Description	Qty.
1	2.3.4.36.073.B	Panel - Overhead Front - 2F - 3.4qt - w/sticker - R2	1
2	920.1.01.0006	Control Board - SS - V2.152 - Horizontal - V2	2
3	3.6.22.010	Screw - M5x10	7
4	3.6.22.028	Screw - M4x12	9
5	3.1.03.04.046	Button Switch - QN16-A3	2
6	3.1.03.03.003	Rocker Switch - RK1-01 2X2	2
7	2.3.4.39.096	Panel - Overhead Bottom - 2F - 3.4qt	1
8	2.3.4.38.051	Panel - Overhead Right - 2F -3.4qt	1
9	2.1.3.50.0068	Shaft - Draw Switch - 148mm	3
10	3.6.03.012	Spring - Shaft - Draw Switch	3
11	3.4.07.06.008	Bracket - Micro Switch&Shaft&Spring	2
12	3.1.03.01.002	Micro Switch - KW-7-2	2
13	3.4.07.07.009	Bracket - Micro Switch&Shaft&Spring - Center	1
14	3.1.03.01.003	Micro Switch - KW-7-2 II	1
15	2.3.4.37.055	Panel - Overhead Left - 2F -3.4qt	1

5. Hopper Agitator



Item	Part Number	Description	Qty.
1	3.4.08.01.034	O-Ring - 31x2	4
2	2.1.1.23.0005	Blade - Hopper Agitator - Standard - V2	2
3	2.1.1.12.0010	Agitator Assembly - 158mm	2
4	2.1.4.02.015	Pulley - Hopper Agitator - Single - 53mm	1
5	920.2.09.0011	Belt - Hopper Agitator - 690mm	1
6	2.1.4.02.016	Pulley - Hopper Agitator - Double - 53mm	1
7	920.2.09.0012	Belt - Hopper Agitator - 245mm	1
8	3.3.04.04.006	Pulley - Hopper Agitator - Drive - 30mm	1
9	2.3.4.45.003	Bracket - Agitator Motor - 84mm	1
10	3.3.01.01.062	Motor - Agitator - 220V - 4RK25GN-C-4GN6K	1

6. Electrical Box Left & Right



6. Electrical Box Left & Right

Item	Part Number	Description	Qty.
1	3.1.02.08.002	Fuse - 0.5A	2
2	3.1.02.08.012	Seat - Fuse - 250V	2
3	3.1.01.04.014	Transformer - 50W - LTT5032OF-31	2
	3.1.01.04.007	Transformer - 50W - 50313MW-32 (Alternative)	2
4	2.2.1.01.0040	Power Board - SS - V2.154	2
5	2.2.4.20.0102	Cover - Electrical Box - 2F - 3.4qt	2
6	3.6.19.001	Screw - M4x8	8
7	3.1.04.01.003	Ribbon Cable - 20 Pin	2
8	3.1.01.01.010	Contactor - 220V - 3RT6017-1AN21	2
9	3.1.01.03.029	Intermediate Relay - AC220V - HH54P-L	2
10	3.1.01.03.031	Base - Relay - TP514X1-E	2
11	2.2.4.18.0009	Electrical Box - Left - 2F - 3.4qt	1
12	2.2.4.19.0013	Electrical Box - Right - 2F - 3.4qt	1
13	3.1.07.14.049	End Cover - Terminal Block - AK6C-TR	1
14	3.1.07.14.048	Terminal Block - AK6-TR	1