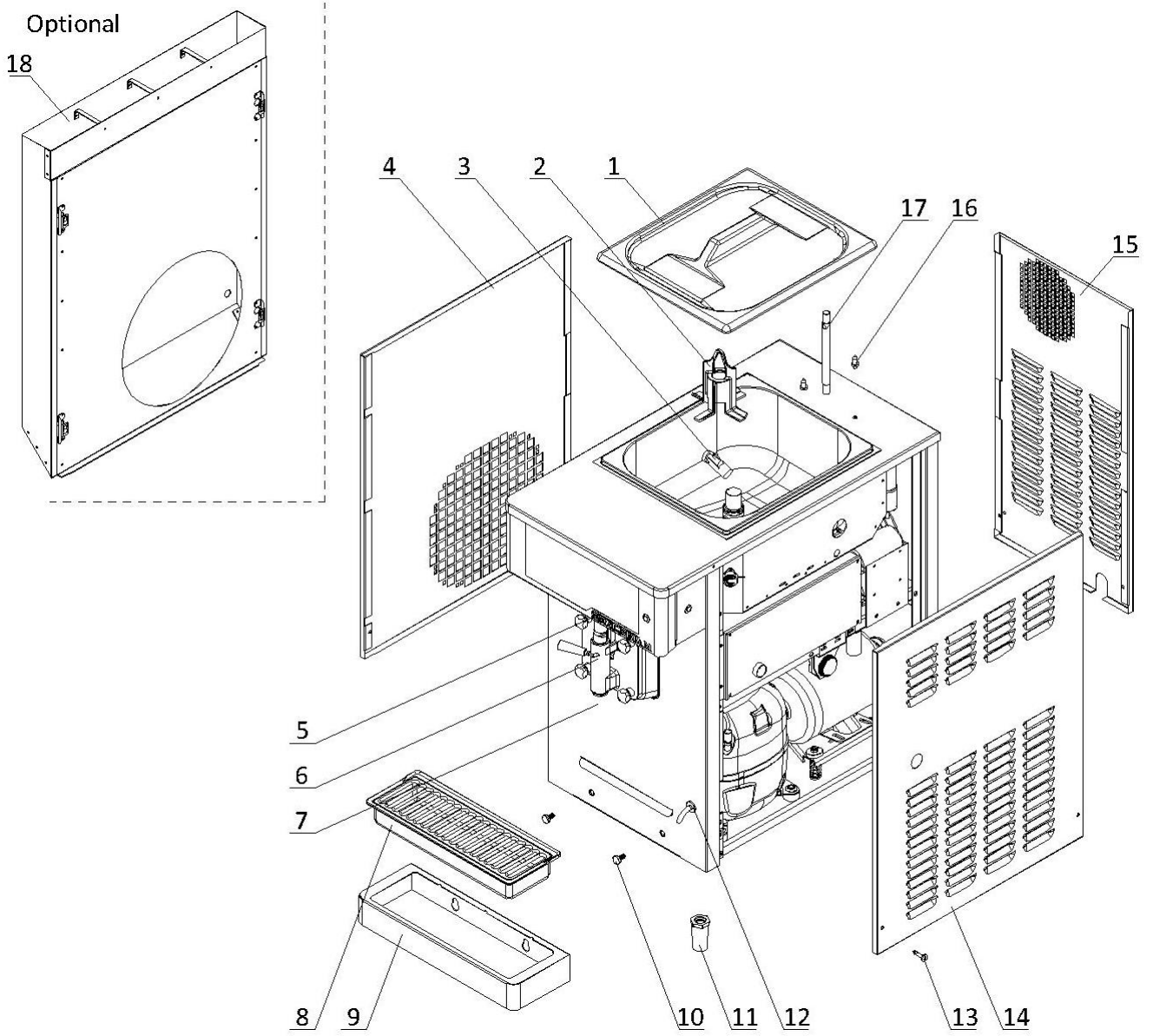


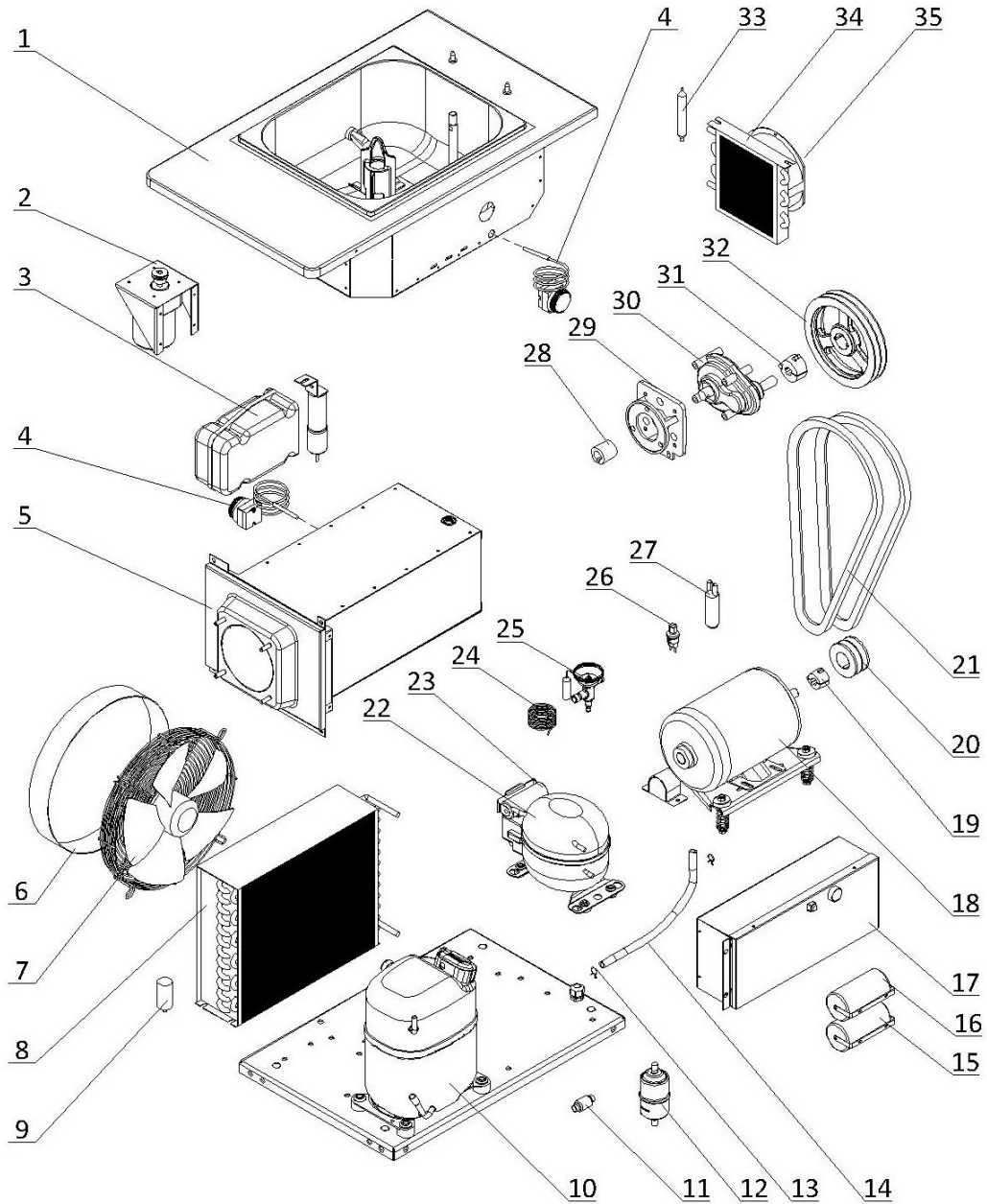
1. External Parts



1. External Parts

Item	Part Number	Description	Qty.
1	3.4.03.02.001	Hopper Lid - 25L	1
2	Page 7	Hopper Agitator	1
3	920.1.04.0002	Mix Low Sensor Assembly	1
4	2.3.4.28.095	Panel - Left - 6690-CL	1
5	Page 6	Draw Switch and Front Control Panel	1
6	Page 5	Dispensing Door and Beater	1
7	2.3.4.26.092	Panel - Lower Front - 6690-CL	1
8	3.4.04.01.017	Front Drip Tray - 410mm	1
9	2.3.4.45.697	Support - Front Drip Tray - 6690-CL	1
10	3.6.39.004	Drip Tray Mounting Bolt	2
11	3.3.05.03.005	Leg - 68mm	4
12	2.1.1.20.0124	Drain Nozzle - Front	1
13	920.2.11.0002	Quarter-Turn Fastener	6
14	2.3.4.30.079	Panel - Right - 6690-CL	1
15	2.3.4.23.106	Panel - Rear - 6690-CL	1
16	3.6.39.011	Hopper Lid Holder	2
17	2.1.3.39.0006	Air Tube - FB	1
18	920.1.08.0014	Air Chute Assembly - 6690-CL (Optional)	1

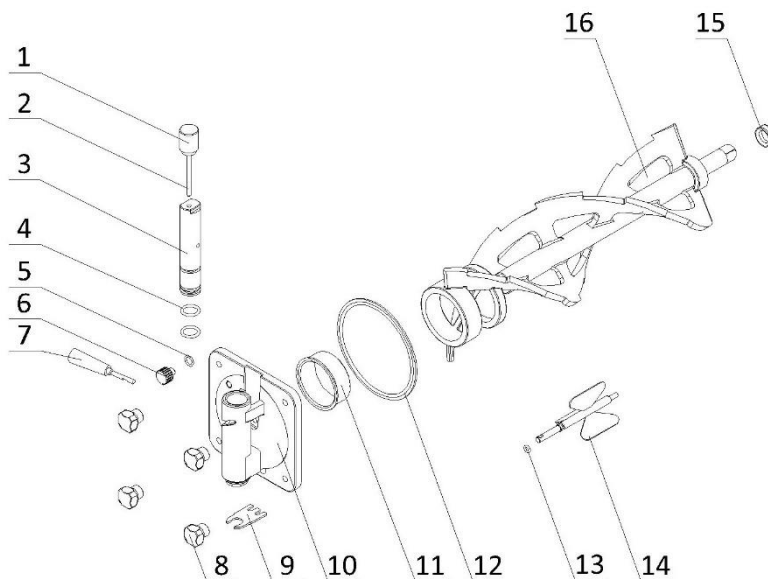
2. Internal Parts



2. Internal Parts

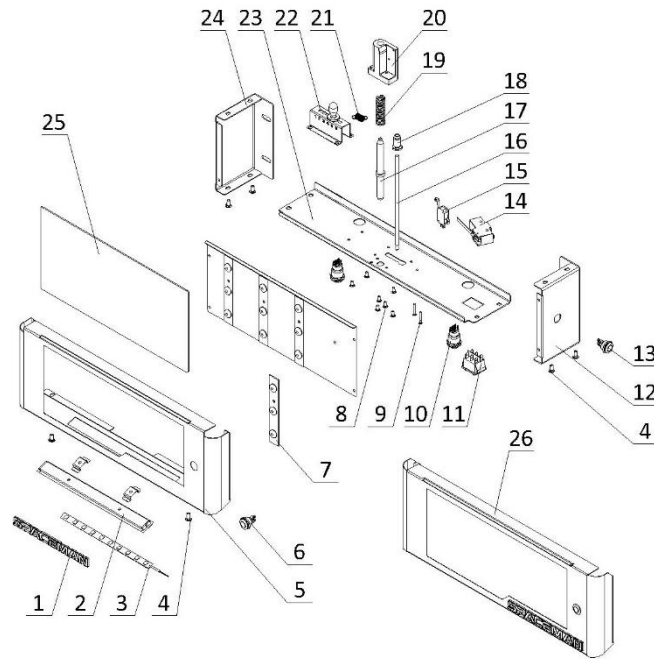
Item	Part Number	Description	Qty.
1	2.1.1.03.0110	Hopper Assembly - 6690-CL	1
2	Page 7	Agitator Motor	1
3	3.2.01.04.024	Start Component - Compressor - CAJ4519Z	1
4	3.1.01.07.003	Thermostat - 0-40°C	2
	3.1.01.07.002	Thermostat - ±30°C (Alternative)	2
5	2.1.1.06.0212	Cylinder Assembly - 6690-CL	1
6	2.1.3.50.0001	Fan Shroud - 108cm	1
7	3.2.03.04.002	Fan Motor - 220/60/1 - YWF4E-300S	1
8	3.2.02.01.006	Main Condenser - Single - 8m ² - 410x315x100	1
9	3.2.03.04.002-2	Capacitor - Fan Motor - 450V - 1.5µF - CBB60	1
10	3.2.01.02.042.A	Primary Compressor - CAJ4519Z	1
11	3.2.04.05.013	Copper Strainer Filter - φ12	1
12	3.2.04.05.002	Filter Drier - Cylinder - DML083S	1
13	3.6.05.024	Squeeze Clamp - Drain Hose - M13	2
14	3.7.06.025-3	Drain Hose - φ9×14 - 540mm	1
15	3.1.02.22.061	Capacitor - Start - 330V - 267.5µF	1
16	3.1.02.22.009	Capacitor - Running - 370V - 25µF	1
17	Page 8	Electrical Box	1
18	3.3.01.05.003	Motor - 220/60/1 - 900W - K56AC63F41	1
19	3.3.04.01.005	Bushing - 1008-16	1
20	3.3.04.02.001	Pulley - Beater Motor - SPA63-2-1008	1
21	3.3.03.01.022	Belt - Motor to Beater - V-XPA850	2
22	3.2.01.01.005.A	Auxiliary Compressor - TL3G	1
23	3.2.01.01.005-1	Start Component - Compressor - TL3G	1
24	3.2.05.01.003	Capillary Tube - 2.2×0.9	1
25	3.2.04.01.013	Thermal Expansion Valve - TUB2134	1
26	3.2.04.06.004	High Pressure Switch - 350~500psi	1
27	3.2.04.07.001	Suction Accumulator - 25×100×0.6	1
28	3.3.02.03.006	Coupling Drive - 3.4qt-4.0qt-7.3qt - 20mm - V3	1
29	2.1.3.15.0003	Bracket - Gear Box - 3.4-7.3qt - 79mm	1
30	3.3.02.01.024	Gear Box - 1:4.94 - 45*20 Shaft - 79mm	1
31	3.3.04.01.008	Bushing - 1610-16	1
32	3.3.04.02.023	Pulley - Gear Box - SPA112-2-1610	1
33	3.2.04.05.001	Filter Drier - Hopper - 16×2.2×120	1
34	3.2.02.01.001	Auxiliary Condenser - Single - 0.7m ²	1
35	3.2.03.01.005	Fan Motor - UF-1751B22H	1

3. Dispensing Door and Beater Assembly



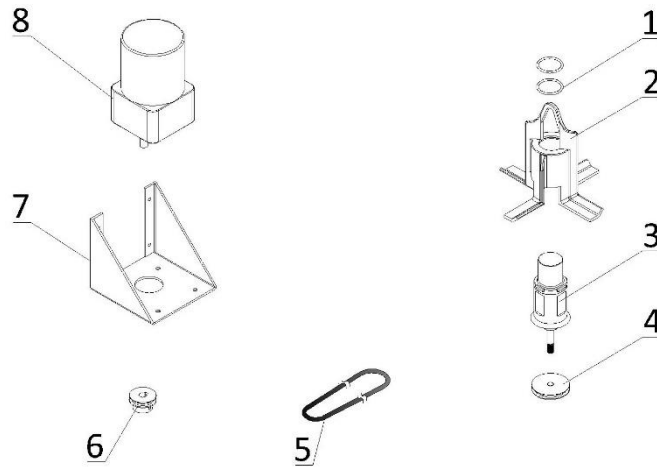
Item	Part Number	Description	Qty.
1	2.1.3.36.0004	Weight - Draw Valve - FB	1
2	2.1.3.36.0003	Pin - Draw Valve - FB	1
3	2.1.3.01.0006	Draw Valve - FB	1
4	3.4.08.01.036	O-Ring - 19x3.55	2
5	3.4.08.01.008	O-Ring - 11.5x2.5	1
6	3.4.07.08.001	Prime Plug - FB	1
7	3.4.05.01.002	Handle - Dispensing - FB	1
8	2.1.3.32.0004	Hand Screw - Dispensing - FB	4
9	2.1.4.04.014	Ice Buster - Dispensing - FB	1
10	2.1.3.14.0006	Dispensing Door - FB	1
11	3.4.01.03.016	Beater Guide - FB - V3	1
12	3.4.08.02.012	Door Gasket - FB - V2	1
13	3.4.08.01.017	O-Ring - 11x2.4	1
14	2.1.1.31.0008	Torque Rotor - FB - V4	1
15	3.4.07.05.007	Gasket - Beater - φ35	1
16	2.1.1.25.0019	Beater - FB - 7.3qt - V3	1

4. Draw Switch and Front Control Panel Assembly



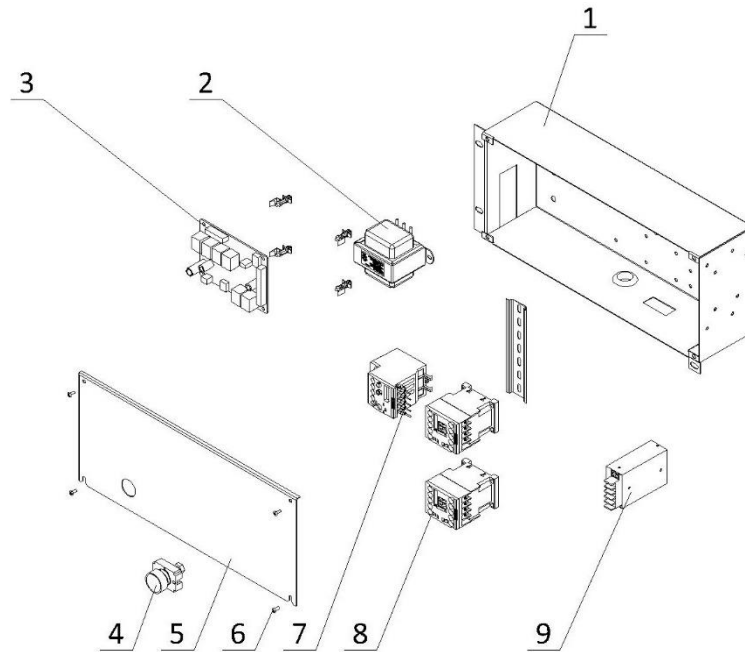
Item	Part Number	Description	Qty.
1	3.1.06.09.003	Emblem - SPACEMAN - 170x16	1
2	3.6.42.005	Bracket - LED Light Strip - 1707A - 231	1
3	3.1.02.14.020	LED Light Strip - STH-2835W-120D-12V-12W - 6000K	1
4	3.6.22.010	Screw - M5x10	6
5	2.1.1.20.0191	Panel - Overhead Front - 6690-CL - V02	1
6	3.1.02.14.014	RGB Light - YM16/ZST/12V/3S+	1
7	3.1.02.14.025	LED Light Bar - STH-B12T130W3B170 - 6500K - 12V	4
8	3.6.22.028	Screw - M4x12	7
9	3.6.22.027	Screw - M4x30	2
10	3.1.03.04.039	Button Switch - QN19-C7	2
11	3.1.03.03.009	Rocker Switch - RK1-01 2X3	1
12	2.3.4.37.060	Panel - Overhead Right - 6795-CL - R02	1
13	3.1.03.04.046	Button Switch - QN16-A3	1
14	3.1.03.02.002	Micro Switch - Torque Lever	1
15	3.1.03.01.002	Micro Switch - KW-7-2	1
16	2.1.4.04.025	Torque Arm - 185mm	1
17	2.1.3.50.0088	Shaft - Draw Switch - 120.3mm	1
18	2.1.4.04.024	Bracket - Spring - FB	1
19	3.6.03.012	Spring - Shaft - Draw Switch	1
20	3.4.07.06.008	Bracket - Micro Switch&Shaft&Spring	1
21	3.6.02.003	Spring - Viscosity - 0.5mm	1
22	920.1.03.0004	Control Levers - Viscosity Adjustment - V2	1
23	2.3.4.39.0116	Panel - Overhead Bottom - 6690-CL - V02	1
24	2.3.4.37.061	Panel - Overhead Left - 6690-CL - R02	1
25	3.4.07.10.004	Flavor Panel - 333x160	1
26	2.1.1.20.0191.A	Overhead Front Panel Assembly - 6690-CL - V02	1

5. Hopper Agitator



Item	Part Number	Description	Qty.
1	3.4.08.01.034	O-Ring - 31x2	2
2	2.1.1.23.0005	Blade - Hopper Agitator - Standard - V2	1
3	2.1.1.12.0003	Agitator Assembly - 124mm	1
4	2.1.4.02.017	Pulley - Hopper Agitator - Single - 47.6mm	1
5	2.1.4.08.045	Belt - Hopper Agitator - 415mm	1
6	3.3.04.04.006	Pulley - Hopper Agitator - Drive - 30mm	1
7	2.3.4.45.007	Bracket - Agitator Motor - 110mm	1
8	3.3.01.01.062	Motor - Agitator - 220V - 4RK25GN-C-4GN6K	1

6. Electrical Box



Item	Part Number	Description	Qty.
1	2.2.4.17.0121	Electrical Box - 6690-CL	1
2	3.1.01.04.014	Transformer - 50W - LTT5032OF-31	1
	3.1.01.04.007	Transformer - 50W - 50313MW-32 (Alternative)	1
3	2.2.1.01.0051	Control Board - FB - F5	1
4	3.1.03.04.002	Reset Button - Thermal Overload	1
5	2.2.4.20.0106	Cover - Electrical Box - 6690-CL	1
6	3.6.19.001	Screw - M4x8	4
7	3.1.01.02.011	Thermal Overload Relay - 3RU6116-1GB0	1
8	3.1.01.01.010	Contactors - 220V - 3RT6017-1AN21	2
9	3.1.01.05.034	Power Supply - MPM-30-12ST	1