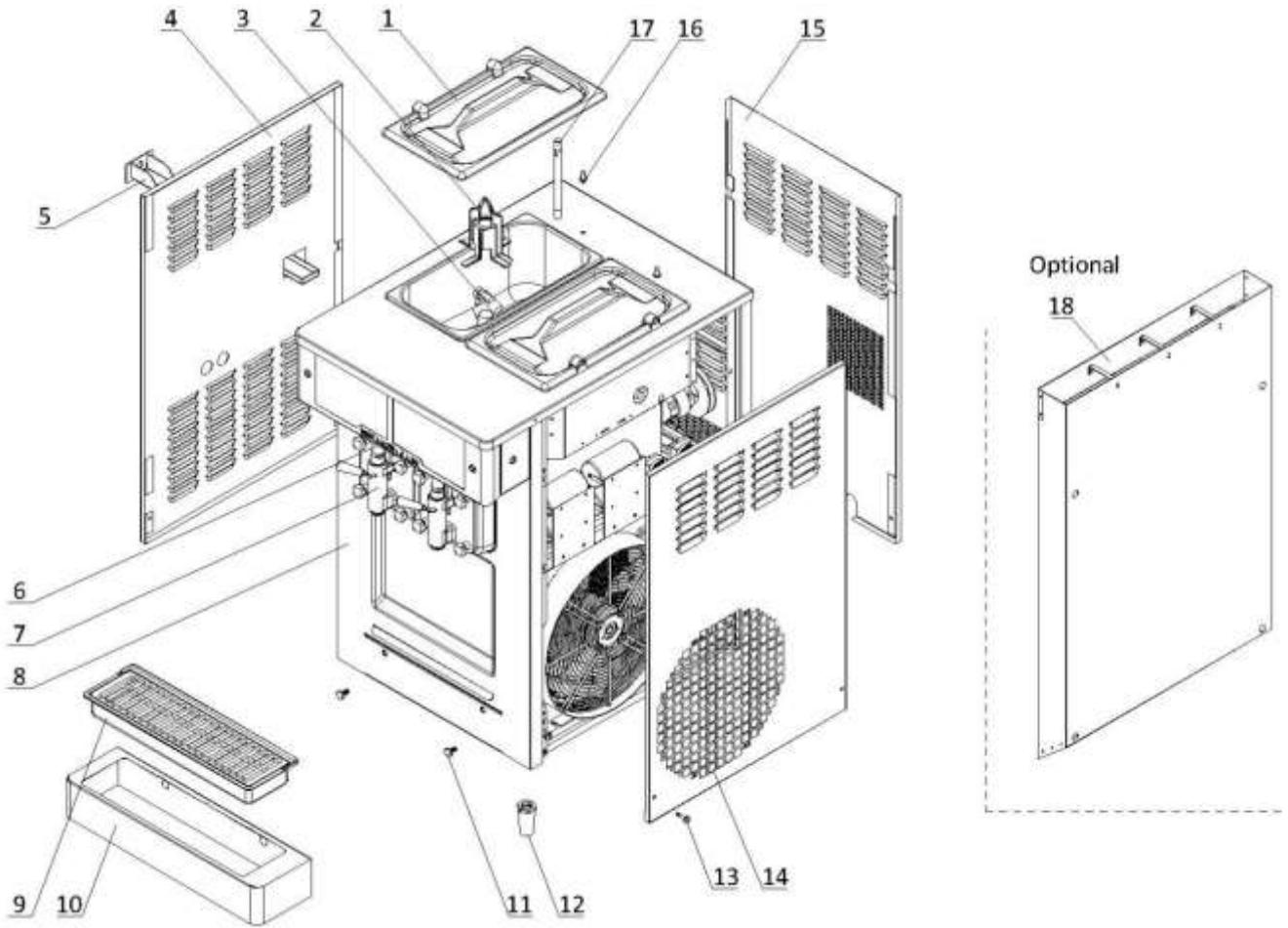


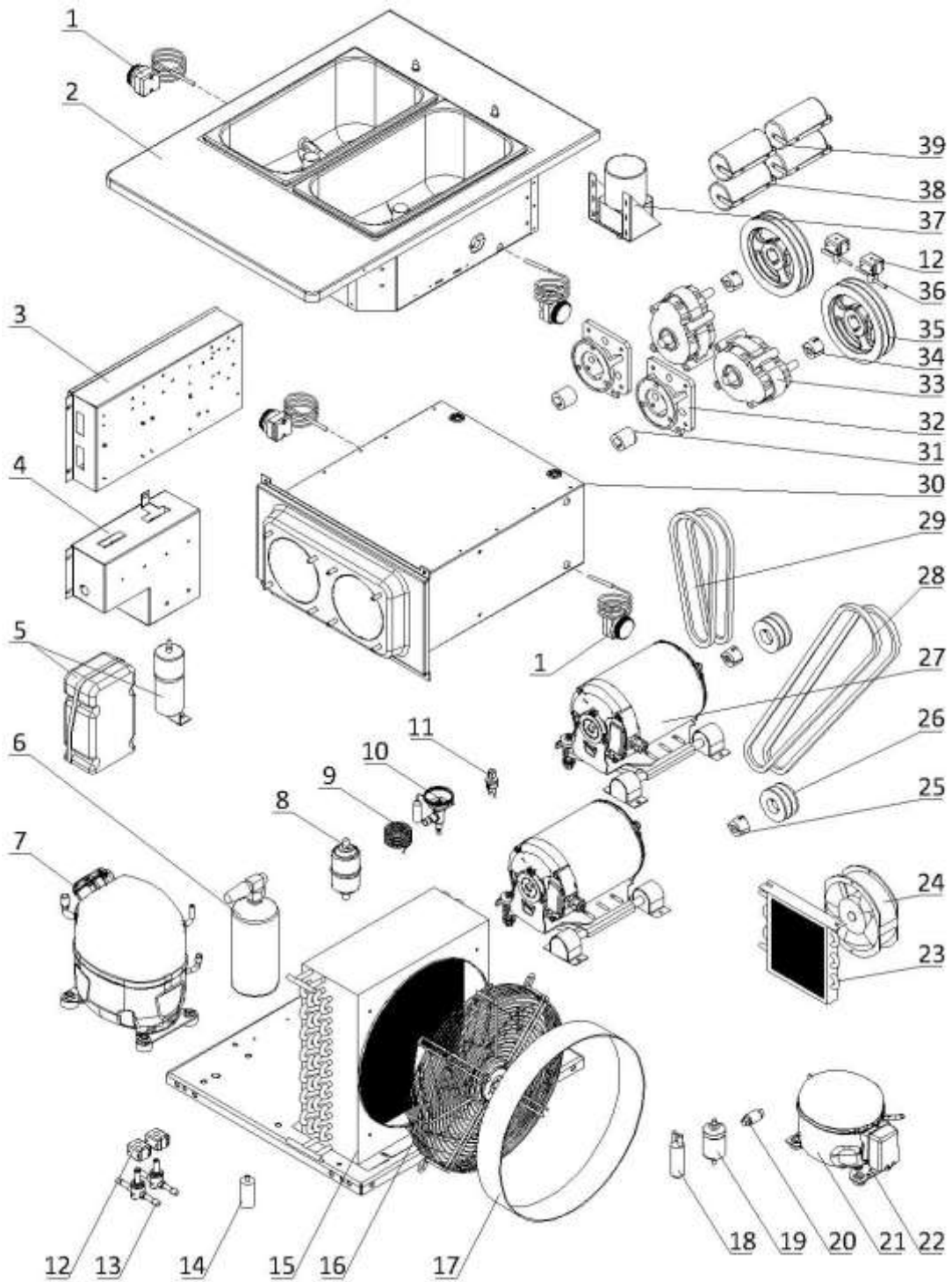
1. External Parts



1. External Parts

Item	Part Number	Description	Qty.
1	3.4.03.01.004	Hopper Lid - 12-15L	2
2	Page 7	Hopper Agitator	2
3	920.1.04.0002	Mix Low Sensor Assembly	2
4	2.3.4.28.106	Panel - Left - 6695-CL V02	1
5	3.4.04.02.001	Internal Drip Tray - 45mm	1
6	Page 6	Draw Switch and Front Control Panel	1
7	Page 5	Dispensing Door and Beater	2
8	2.3.4.26.112	Panel - Lower Front - 6695-CL V02	1
9	3.4.04.01.015	Front Drip Tray - 490mm	1
10	2.3.4.45.705	Support - Front Drip Tray - 6695-CL	1
11	3.6.39.004	Drip Tray Mounting Bolt	2
12	3.3.05.03.005	Leg - 68mm	4
13	920.2.11.0002	Quarter-Turn Fastener	6
14	2.3.4.30.080	Panel - Right - 6695-CL	1
15	2.3.4.23.107	Panel - Rear - 6695-CL	1
16	3.6.39.011	Hopper Lid Holder	2
17	2.1.3.39.0006	Air Tube - FB	2
18	920.1.08.0015	Air Chute Assembly - 6695-CL (Optional)	1

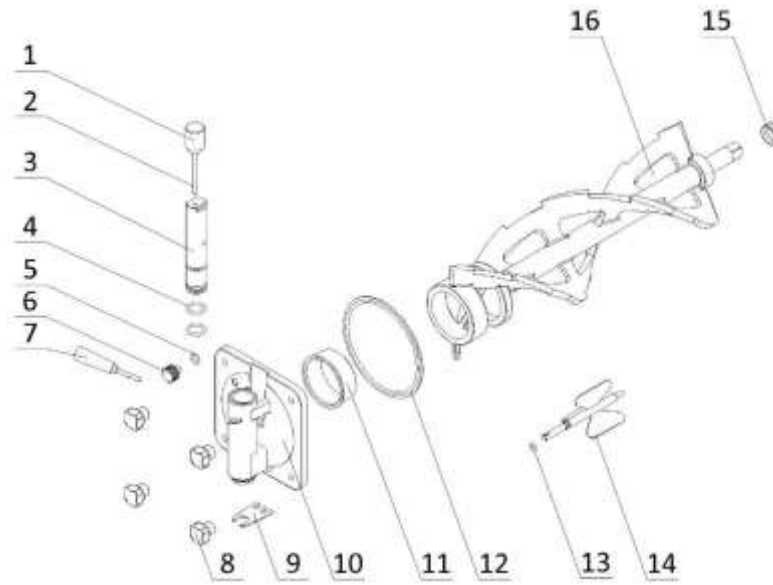
2. Internal Parts



2. Internal Parts

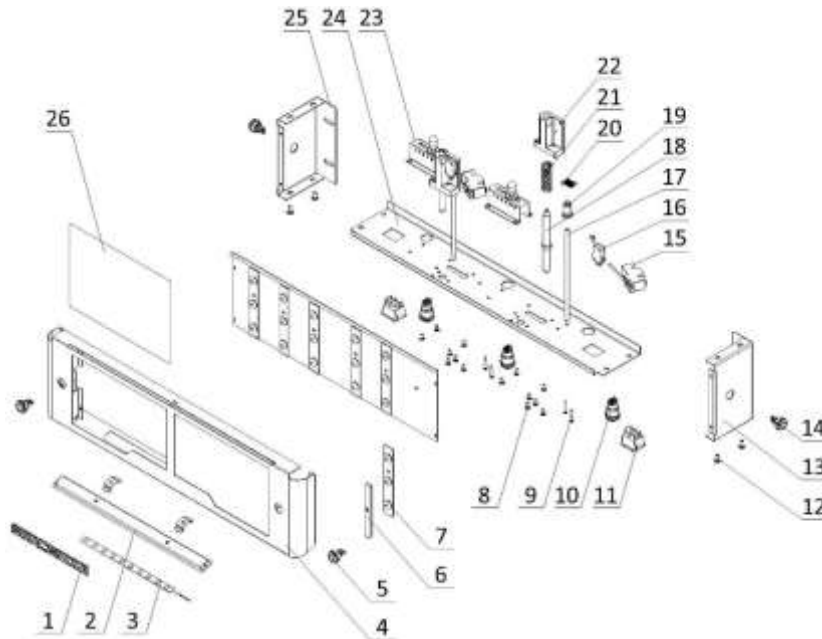
Item	Part Number	Description	Qty.
1	3.1.01.07.003	Thermostat - 0-40°C	4
2	2.1.1.03.0134	Hopper Assembly - 6695-CL	1
3	Page 8	Power Control Box	1
4	Page 9	Electrical Box	1
5	3.2.01.04.019	Start Component - Compressor - CAJ4519Z - 50Hz	1
6	3.2.04.08.001	liquid Receiver - 76x280	1
7	3.2.01.02.040.A	Primary Compressor - CAJ4519Z - 50Hz	1
8	3.2.04.05.002	Filter Drier - Cylinder - DML083S	1
9	3.2.05.01.002	Capillary Tube - 2x0.7	1
10	3.2.04.01.012	Thermal Expansion Valve - TUB2132	1
11	3.2.04.06.005	High Pressure Switch - 350~500psi	1
12	3.2.04.04.059	Solenoid Coil - FQ-A0522G-000502-G502	4
13	3.2.04.04.058	Solenoid Valve Body - KDF6H01	2
14	3.2.03.03.004-2	Capacitor - Fan Motor - 450V - 5μF	1
15	3.2.02.01.007	Main Condenser - Single - 10m ²	1
16	3.2.03.03.004	Fan Motor - 220/50/1 - YWF4E-350S	1
17	2.1.3.50.0002	Fan Shroud - 123cm	1
18	3.2.04.07.001	Suction Accumulator - 25x100x0.6	1
19	3.2.04.05.016	Filter Drier - Hopper - DTGA 032S	1
20	3.2.04.05.013	Copper Strainer Filter - φ12	1
21	3.2.01.01.002.A	Auxiliary Compressor - EM30HHR	1
22	3.2.01.01.002-1	Start Component - Compressor - EM30HHR	1
23	3.2.02.01.001	Auxiliary Condenser - Single - 0.7m ²	1
24	3.2.03.01.005	Fan Motor - UF-1751B22H	1
25	3.3.04.01.005	Bushing - 1008-16	2
26	3.3.04.02.001	Pulley - Beater Motor - SPA63-2-1008	2
27	3.3.01.03.003	Motor - 220/50/1 - 450W	2
28	3.3.03.01.008	Belt - Motor to Beater - V-XPA1307	2
29	3.3.03.01.021	Belt - Motor to Beater - V-XPA832	2
30	2.1.1.06.0211	Cylinder Assembly - 6695-CL	1
31	3.3.02.03.006	Coupling Drive - 3.4qt-4.0qt-7.3qt - 20mm - V3	2
32	2.1.3.15.0003	Bracket - Gear Box - 3.4-7.3qt - 79mm	2
33	3.3.02.01.024	Gear Box - 1:4.94 - 45*20 Shaft - 79mm	2
34	3.3.04.01.008	Bushing - 1610-16	2
35	3.3.04.02.023	Pulley - Gear Box - SPA112-2-1610	2
36	3.2.04.04.069	Solenoid Valve Body - LDF2A01	2
37	Page 7	Agitator Motor Assembly	1
38	3.1.02.22.062	Capacitor - Start - 330V - 160μF	2
39	3.1.02.22.009	Capacitor - Running - 370V - 25μF	2

3. Dispensing Door and Beater



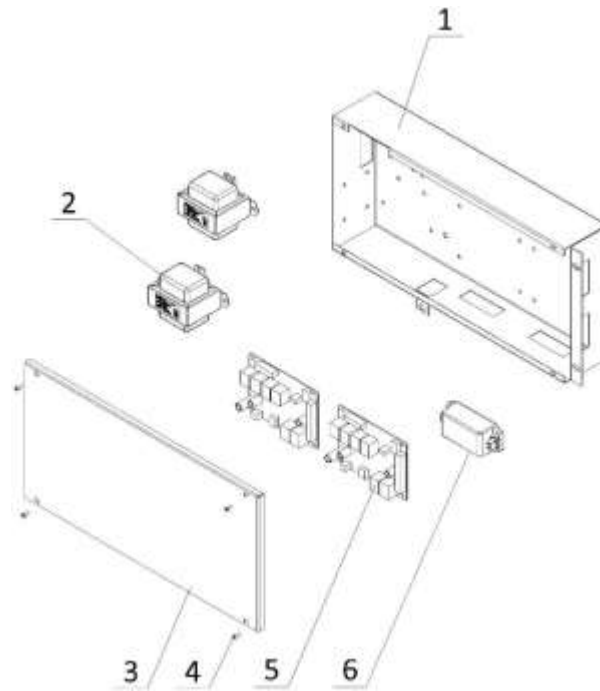
Item	Part Number	Description	Qty.
1	2.1.3.36.0004	Weight - Draw Valve - FB	2
2	2.1.3.36.0003	Pin - Draw Valve - FB	2
3	2.1.3.01.0006	Draw Valve - FB	2
4	3.4.08.01.036	O-Ring - 19x3.55	4
5	3.4.08.01.008	O-Ring - 11.5x2.5	2
6	3.4.07.08.001	Prime Plug - FB	2
7	3.4.05.01.002	Handle - Dispensing - FB	2
8	2.1.3.32.0004	Hand Screw - Dispensing - FB	8
9	2.1.4.04.014	Ice Buster - Dispensing - FB	2
10	2.1.3.14.0006	Dispensing Door - FB	2
11	3.4.01.03.016	Beater Guide - FB - V3	2
12	3.4.08.02.012	Door Gasket - FB - V2	2
13	3.4.08.01.017	O-Ring - 11x2.4	2
14	2.1.1.31.0008	Torque Rotor - FB - V4	2
15	3.4.07.05.007	Gasket - Beater - φ35	2
16	2.1.1.25.0019	Beater - FB - 7.3qt - V3	2

4. Draw Switch and Front Control Panel



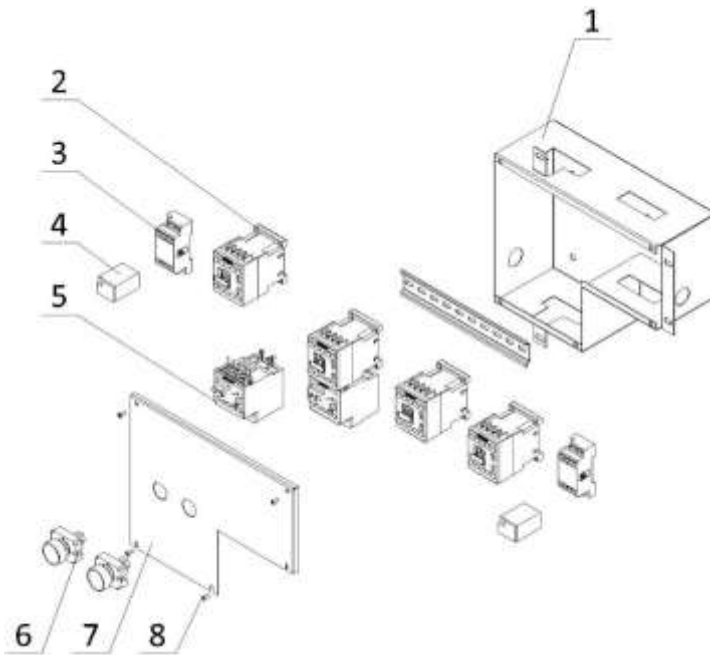
Item	Part Number	Description	Qty.
1	3.1.06.09.003	Emblem - SPACEMAN - 170x16	1
2	3.6.42.003	Bracket - LED Light Strip - 1707A - 323	1
3	3.1.02.14.020	LED Light Strip - STH-2835W-120D-12V-12W - 6000K	1
4	2.1.1.20.0160	Panel - Overhead Front - 6695-CL	1
5	3.1.02.14.014	RGB Light - YM16/ZST/12V/3S+	2
6	3.6.36.043	Overhead Magnets	4
7	3.1.02.14.025	LED Light Bar - STH-B12T130W3B170 - 6500K - 12V	6
8	3.6.22.028	Screw - M4x12	14
9	3.6.22.027	Screw - M4x30	4
10	3.1.03.04.039	Button Switch - QN19-C7	3
11	3.1.03.03.009	Rocker Switch - RK1-01 2X3	2
12	3.6.22.010	Screw - M5x10	4
13	2.1.1.20.0157	Panel - Overhead Right - 6690/6695-CL	1
14	3.1.03.04.046	Button Switch - QN16-A3	2
15	3.1.03.02.002	Micro Switch - Torque Lever	2
16	3.1.03.01.002	Micro Switch - KW-7-2	2
17	2.1.4.04.025	Torque Arm - 185mm	2
18	2.1.3.50.0088	Shaft - Draw Switch - 120.3mm	2
19	2.1.4.04.024	Bracket - Spring - FB	2
20	3.6.02.003	Spring - Viscosity - 0.5mm	2
21	3.6.03.012	Spring - Shaft - Draw Switch	2
22	3.4.07.06.008	Bracket - Micro Switch&Shaft&Spring	2
23	920.1.03.0004	Control Levers - Viscosity Adjustment - V2	2
24	2.3.4.39.103	Panel - Overhead Bottom - 6695-CL	1
25	2.1.1.20.0159	Panel - Overhead Left - 6695-CL	1
26	3.4.07.10.010	Flavor Panel - 225x160	2

6. Power Control Box



Ite	Part Number	Description	Qty.
1	2.2.4.23.0163	Power Control Box - 6695-CL	1
2	3.1.01.04.002	Transformer - 50W	2
3	2.2.4.23.0164	Cover - Power Control Box - 6695-CL	1
4	3.6.19.001	Screw - M4x8	4
5	2.2.1.01.0051	Control Board - FB - F5	2
6	3.1.01.05.034	Power Supply - MPM-30-12ST	1

7. Electrical Box



Ite	Part Number	Description	Qty.
1	2.2.4.17.0122	Electrical Box - 6695-CL	1
2	3.1.01.01.010	Contactor - 220V - 3RT6017-1AN21	4
3	3.1.01.03.021	Base - Relay - TP68X1-E	2
4	3.1.01.03.033	Intermediate Relay - AC220V - HH62P-L	2
5	3.1.01.02.010	Thermal Overload Relay - 3RU6116-1EB0	2
6	3.1.03.04.002	Reset Button - Thermal Overload	2
7	2.2.4.20.0107	Cover - Electrical Box - 6695-CL	1
8	3.6.19.001	Screw - M4x8	4